

ST2/ IL1RL1, Human, Recombinant

货号 : PCK167

产品信息

别名	Interleukin-1 Receptor-like 1; Protein ST2; DER4; ST2; T1
物种	Human
表达宿主	Human Cells
序列信息	Lys19-Phe328
检索号	Q01638-2
分子量	36.0 kDa
标签	C-6His
生物活性	Immobilized Human ST2-His at 5 μ g/ml (100 μ l/well) can bind Human IL-33-His. The ED50 of Human IL-33-His is 8.44 ng/ml.

产品特性

纯度	>95% as determined by reducing SDS-PAGE.
内毒素	<1.0 EU per μ g as determined by LAL test.
保存	Lyophilized protein should be stored at -5~-20 $^{\circ}$ C, stable for one year after receipt. Reconstituted protein solution can be stored at 2-8 $^{\circ}$ C for 2-7 days. Aliquots of reconstituted samples are stable at -5~-20 $^{\circ}$ C for 3 months.
运输	Ambient temperature or ice pack.
制剂	Lyophilized from a 0.2 μ m filtered solution of 20mM PB, 150mM NaCl, pH7.4.



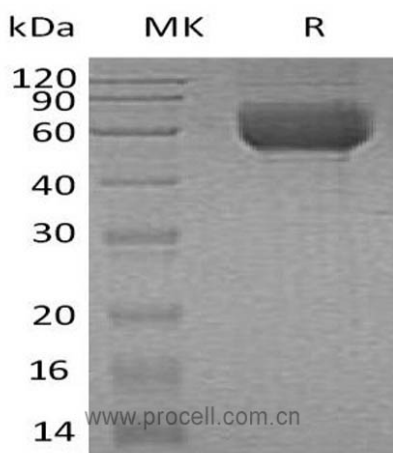
复融

Always centrifuge tubes before opening. Do not mix by vortex or pipetting. It is not recommended to reconstitute to a concentration less than 100 µg/ml. Dissolve the lyophilized protein in distilled water. Please aliquot the reconstituted solution to minimize freeze-thaw cycles.

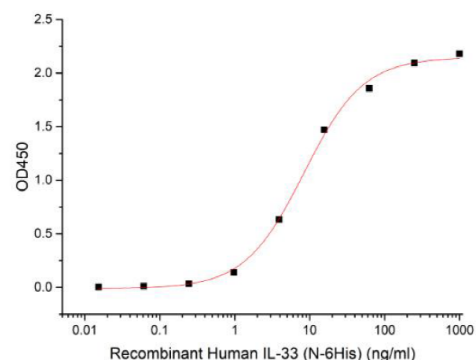
背景介绍

Interleukin 1 Receptor-like 1 (IL1RL1) is a member of the Interleukin-1 Receptor family, Contains 3 Ig-like C2-type domains and 1 TIR domain. It is highly expressed in kidney, lung, placenta, stomach, skeletal muscle, colon and small intestine. IL1RL1 is a Receptor for Interleukin-33, its stimulation recruits MYD88, IRAK1, IRAK4, and TRAF6, followed by phosphorylation of MAPK3/ ERK1 and/ or MAPK1/ ERK2, MAPK14, and MAPK8. IL1RL1 may possibly be involved in helper T-cell function. Soluble IL1RL1 also acts as a negative regulator of Th2 Cytokine production, it directly implicated in the progression of cardiac disease.

SDS-PAGE



生物活性



Immobilized Human ST2-His at 5µg/ml (100 µl/well) can bind Human IL-33-His. The ED50 of Human IL-33-His is 8.44 ng/ml.

